

Process to Add Block and Unblock Internet Explorer to Application Start

The Application Start feature of the SCRM allows an administrator the ability to remotely run any type of file on the Smart Shield® client workstation. When used in conjunction with the below steps, this feature will allow an administrator to turn Internet Explorer's access to the internet on and off on the fly.

NOTE: The Application Start feature is only available with the Screen View module.

Steps to Create Application Files on Smart Shield® Clients:

1. Save the following .bat file to the SCRM machine...

http://www.centuriontech.com/smartsupport/scripts/IEonoff_AppStart.bat

Or copy the below text into a Notepad document and save is as a .bat file...

```
@echo off

mkdir "C:\Windows\Temp\ct"

::Create disable files
> C:\Windows\Temp\ct\disable\Eaccess.reg ECHO REGEDIT4
>>C:\Windows\Temp\ct\disable\Eaccess.reg ECHO.
>>C:\Windows\Temp\ct\disable\Eaccess.reg ECHO [HKEY_CURRENT_USER\Software\Microsoft\Windows\CurrentVersion\Internet Settings]
>>C:\Windows\Temp\ct\disable\Eaccess.reg ECHO "ProxyEnable"=dword:00000001
>>C:\Windows\Temp\ct\disable\Eaccess.reg ECHO "ProxyServer"="Centurion"
>>C:\Windows\Temp\ct\disable\Eaccess.reg ECHO.
>>C:\Windows\Temp\ct\disable\Eaccess.reg ECHO [HKEY_CURRENT_USER\Software\Policies\Microsoft\Internet Explorer\Restrictions]
>>C:\Windows\Temp\ct\disable\Eaccess.reg ECHO "NoBrowserOptions"=dword:00000001
>>C:\Windows\Temp\ct\disable\Eaccess.reg ECHO.
>>C:\Windows\Temp\ct\disable\Eaccess.reg ECHO [HKEY_CURRENT_USER\SOFTWARE\Microsoft\Windows\CurrentVersion\Policies\System]
>>C:\Windows\Temp\ct\disable\Eaccess.reg ECHO "DisableRegistryTools"=dword:00000001
>>C:\Windows\Temp\ct\disable\Eaccess.reg ECHO.
> C:\Windows\Temp\ct\IEdisable.bat ECHO @ECHO OFF
>>C:\Windows\Temp\ct\IEdisable.bat ECHO taskkill /f /im iexplore.exe
>>C:\Windows\Temp\ct\IEdisable.bat ECHO regedit /s C:\Windows\Temp\ct\disable\Eaccess.reg

::Create enable files
> C:\Windows\Temp\ct\enable\Eaccess.reg ECHO REGEDIT4
>>C:\Windows\Temp\ct\enable\Eaccess.reg ECHO.
>>C:\Windows\Temp\ct\enable\Eaccess.reg ECHO [HKEY_CURRENT_USER\Software\Microsoft\Windows\CurrentVersion\Internet Settings]
>>C:\Windows\Temp\ct\enable\Eaccess.reg ECHO "ProxyEnable"=dword:00000000
>>C:\Windows\Temp\ct\enable\Eaccess.reg ECHO "ProxyServer"=""
>>C:\Windows\Temp\ct\enable\Eaccess.reg ECHO.
>>C:\Windows\Temp\ct\enable\Eaccess.reg ECHO [HKEY_CURRENT_USER\Software\Policies\Microsoft\Internet Explorer\Restrictions]
>>C:\Windows\Temp\ct\enable\Eaccess.reg ECHO "NoBrowserOptions"=dword:00000000
>>C:\Windows\Temp\ct\enable\Eaccess.reg ECHO.
>>C:\Windows\Temp\ct\enable\Eaccess.reg ECHO [HKEY_CURRENT_USER\SOFTWARE\Microsoft\Windows\CurrentVersion\Policies\System]
>>C:\Windows\Temp\ct\enable\Eaccess.reg ECHO "DisableRegistryTools"=dword:00000000
>>C:\Windows\Temp\ct\enable\Eaccess.reg ECHO.
> C:\Windows\Temp\ct\IEenable.bat ECHO @ECHO OFF
>>C:\Windows\Temp\ct\IEenable.bat ECHO taskkill /f /im iexplore.exe
>>C:\Windows\Temp\ct\IEenable.bat ECHO regedit /s C:\Windows\Temp\ct\enable\Eaccess.reg

::Changes file attributes to hidden and system on the clients
attrib +S +H C:\Windows\Temp\ct\disable\Eaccess.reg
attrib +S +H C:\Windows\Temp\ct\IEdisable.bat
attrib +S +H C:\Windows\Temp\ct\enable\Eaccess.reg
attrib +S +H C:\Windows\Temp\ct\IEenable.bat
attrib +S +H C:\Windows\Temp\ct
```

2. Remote Execute the *IEonoff.bat* file on the Smart Shield® clients.

To Remote Execute:

1. Highlight your clients.
2. Go to the “Client Control” menu.
3. Choose the “Remote Execute” option.
4. Browse to the location of the *IEonoff.bat* file.
5. Click the “Remote Execute” button.

Note: Make sure the clients are disabled and connected to the SCRM when running the Remote Execute command.

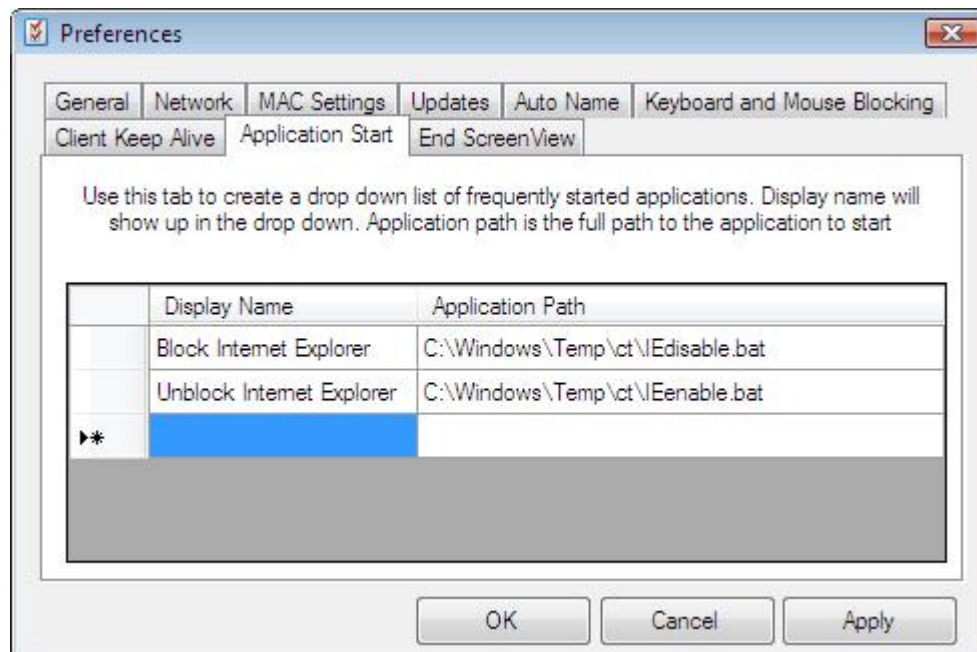
3. Once the Remote Execute command is successful, you should now setup the Application Start feature.

Steps to Configure Application Start on SCRM:

1. Go to the “File” menu and choose “Preferences”.
2. In Preferences, go to the “Application Start” tab and enter the name and file path to the new client files...

C:\Windows\Temp\ct\IEdisable.bat

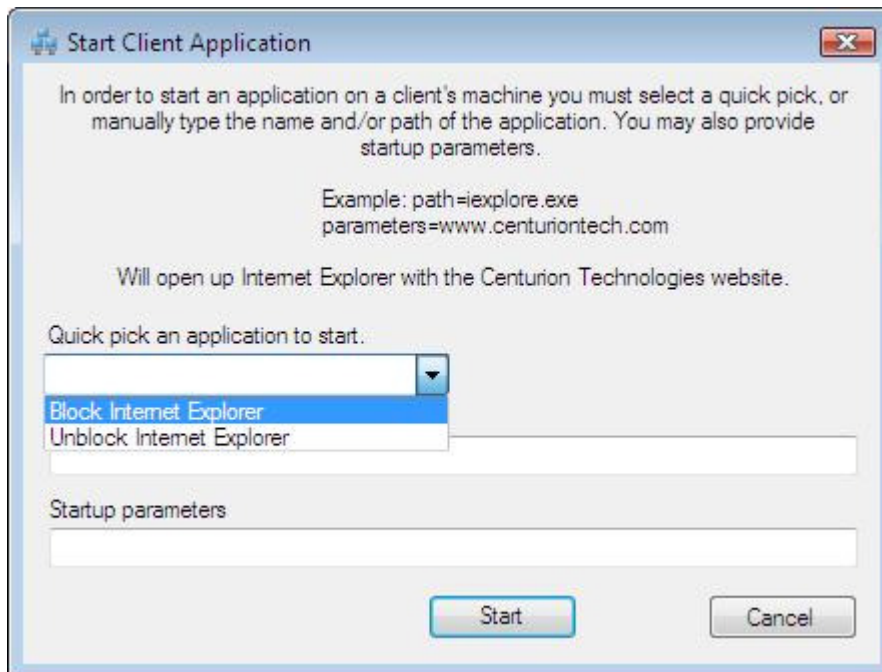
C:\Windows\Temp\ct\IEenable.bat



3. Click “Apply” and “OK”. You have now saved the Application Start settings and are ready to run them on your Smart Shield® clients.

Steps to Block and Unblock Internet Explorer:

1. Highlight the Smart Shield® clients to block or unblock Internet Explorer on.
2. Go to the “Client Control” menu.
3. Choose “Misc. Configuration”.
4. Select the “Start Client Application” option.
5. In the Start Client Application window, select the appropriate choice from the Quick Pick list.



6. Click the “Start” button to Block or Unblock Internet Explorer.

For assistance in setting up this process or for general questions regarding this process, please contact Centurion Technologies Technical Support department at 888.265.6055 or email at support@centuriontech.com.